

# 6 SPECTACULAR SITES – 1 SHARED IDENTITY

## UNESCO WORLD HERITAGE IN SAXONY-ANHALT

### BAUHAUS AND ITS SITES IN DESSAU

### THE GARDEN KINGDOM OF DESSAU-WÖRLITZ

### NEBRA SKY DISC

(MEMORY OF THE WORLD)

### LUTHER MEMORIALS IN EISLEBEN AND WITTENBERG

### NAUMBURG CATHEDRAL

### QUEDLINBURG'S COLLEGIATE CHURCH, CASTLE AND OLD TOWN

**Cultural abundance, quality  
and diversity to make you marvel**

**Modern-day Saxony-Anhalt has an outstanding wealth of cultural landmarks from German and European history.** This legacy is internationally renowned: UNESCO has awarded five cultural sites, a biosphere reserve and various precious documents World Heritage status. Each site is significant in its own right, but together they shape the character of Saxony-Anhalt and its residents. They are also magnets for curious visitors from near and far.

For the first time, Saxony-Anhalt's UNESCO World Heritage Sites have taken on a consistent identity worthy of their significance in the state's cultural scene. This new identity helps to raise the profile of the sites and Saxony-Anhalt. Joint communication will now follow one unifying central idea. The 6 Spectacular Sites highlight and give shape to the proximity and interconnections between the cultural heritage in the area. This title designates the quality, abundance, diversity and wealth of the cultural sites and emphasizes their unique, distinctive and captivating nature.

**Saxony-Anhalt is the home of  
world-changing ideas.**

**With garden landscapes dating from the Age of Enlightenment, picturesque medieval old towns and landmarks in architectural history,** Saxony-Anhalt has a rich and diverse cultural heritage. Revolutionary ideas that originated in these significant places have spread around the world – ideas that show that Saxony-Anhalt has always been home to modern thinking. This is the birthplace of the Reformation and the cradle of classical modernism.

And on top of that, **Saxony-Anhalt's UNESCO World Heritage inspires our future.** This statement of confidence is a recognition that our past has a future – just a handful of words that span the history built on modern-day Saxony-Anhalt's ground. A link between our historic roots and our forward-looking perspective. This helps drive the state's #moderndenken campaign ("modern thinking") and realize future-oriented projects.

**Saxony-Anhalt's World Heritage Sites are well worth a visit and are easily accessible. They offer experiences that will stay with you for years to come.**

Three enticing UNESCO World Heritage Sites can be found in Dessau-Roßlau and Wittenberg alone: situated over an area of around 35km, the sites are combined under the title Luther – Bauhaus – Garden Kingdom. Visitors can enjoy the economic benefits of the WelterbeCard to explore the art, culture, countryside and leisure opportunities that the World Heritage Region has to offer. The three sites are nestled in the Middle Elbe Biosphere Reserve, which is part of the UNESCO Elbe River Landscape Biosphere Reserve. World Heritage Sites sit on the wild banks of the mighty Elbe, alongside beaver lodges and wetlands. The symbiosis between cultural history and the natural world is plain to see elsewhere, too: Visitors to Harz Nature Park, part of the Harz, Braunschweiger Land UNESCO Global Geopark Ostfalen, can immerse themselves in a unique and diverse natural environment of forests, mountain meadows and mythical mountain ranges.

**Anyone looking to experience UNESCO World Heritage in a beautiful tourist destination is in the right place in Saxony-Anhalt, where inspiring sites abound.**

[www.world-heritage-saxony-anhalt.com/](http://www.world-heritage-saxony-anhalt.com/)

To improve readability, the masculine form of nouns and pronouns related to people have been used. In the interests of equality, these terms refer to all genders. The decision to use the shorter linguistic form was taken purely on the basis of editorial reasons and is not a value judgement.



SACHSEN-ANHALT

#moderndenken

## UNESCO WORLD HERITAGE IN SAXONY-ANHALT:

### WORLD HERITAGE AT A GLANCE

HAMBURG

SAXONY-ANHALT

GERMANY

BERLIN

HANOVER

MAGDEBURG

UNESCO Global  
Geopark Harz ·  
Braunschweiger Land ·  
Ostfalen

Elbe River Landscape UNESCO  
biosphere reserve

DESSAU-  
ROSSLAU

LUTHERSTADT  
WITTENBERG

WORLD HERITAGE  
CITY OF QUEDLINBURG

WÖRLITZ

LUTHERSTADT  
EISLEBEN

HALLE (SAALE)

LEIPZIG

NEBRA

NAUMBURG

ERFURT

#### Getting here:

Saxony-Anhalt is easy to access by bike, car, train, bus and by air. It is situated in the heart of Germany and borders Lower Saxony, Thuringia, Saxony and Brandenburg. The state capital Magdeburg is 150 km from Berlin, 280 km from Hamburg, 420 km from Frankfurt/Main and 225 km from Frankfurt/Oder. All the tourist sites in Saxony-Anhalt can be reached quickly and easily via five motorways, the A2, and A9, A14, the new A36 and the A38, excellent highways and one of Europe's most extensive rail networks, as well as a very efficient local transport system.

#### TRAVELLING IN SAXONY-ANHALT.

Great value rail travel with attractive train fares on offer from DB Regio AG – travel in comfort with no traffic jams: Saxony-Anhalt Hopper Ticket, Saxony-Anhalt Ticket, service number: **+49 (0) 180 6 99 66 33** (20 ct/call from a landline, max. 60 ct/call from a mobile) for info on ticket prices and timetables and on services provided by Deutsche Bahn; to book tickets over the phone, call **+49 (0) 180 6 99 66 33** (20 ct/call from a landline, max. 60 ct/call from a mobile). Mobility Service Center: **+49 (0) 180 6 51 25 12** (20 ct/call from a landline, max. 60 ct/call from a mobile), available daily from 6 a.m. to 10 p.m. for planning journeys for passengers with access needs. Timetable online: info online at: **www.bahn.com** > Enter train station

DB – Your Mobility Partner

# BAUHAUS DESSAU

## The dawn of Modernism – at your fingertips



Dessau in Saxony-Anhalt is the city with the largest number of original Bauhaus buildings in the world. The most significant buildings are UNESCO World Heritage Sites. Opened in September 2019, the Bauhaus Museum Dessau is now another, more contemporary building to add to the list. The Bauhaus Dessau Foundation collection is being showcased here in its entirety for the first time. There is more than enough to tempt culture lovers and curious tourists alike.

After the First World War, a new era began, marked by modern housing, experimental art and reformed schools. Radical innovations in architecture, art and design were being developed at the **Bauhaus in Dessau**. The Bauhaus was founded by Walter Gropius in Weimar on April 12, 1919. The architect's main project was to create a "building of the future" as a Gesamtkunstwerk. He made this project a reality with his designs for the Bauhaus in Dessau and the Master Houses. To this day, the buildings are seen as key works in European Modernism that set the trend for the **Neues Bauen** architectural movement. They are UNESCO World Heritage Sites, along with the **Houses with Balcony Access**, which are prime examples of the development of twentieth-century social housing.

Bauhaus at every turn: The School of Art and Design was active for just under seven years (1925 to 1932), but left behind a powerful architectural legacy in the town. The majority of Bauhaus buildings are located here in Dessau and are quintessential examples of Bauhaus design. Visitors can discover these fine specimens of Modernism on tours or on their own individual walkabouts through the city. They can discover more about the buildings' architecture, what they were used for and the people who have lived in them and actively engage with their distinctive character. The very buildings themselves are like exhibition pieces – their architecture, walls, façades and rooms hold the keys to the buildings' history.

The new Bauhaus Museum Dessau features an exhibition called **"Versuchsstätte Bauhaus. Die Sammlung"** (**Bauhaus Experimental Spaces: The Collection**) that explores the workings and impact of Bauhaus as a university and how the ideas that shape our everyday culture to this day came into being. The exhibition displays over 1,000 artefacts from the Dessau collection, which is made up of around 50,000 objects in total, making it the second largest Bauhaus collection worldwide. The exhibition doesn't focus on the celebrated design icons and their masters, however, but on the school and its students. The themed sections focus on topics such as teaching strategies and classroom work, illustrated by mutual learning between teachers and pupils such as Marianne Brandt and László Moholy-Nagy, and Gunta Stölzl and Paul Klee. The development process behind carefully selected Bauhaus objects serves as a means to depict the Bauhaus as a multifaceted place of experimentation, as a partner for industry and as a driven communicator.

The exhibition is supplemented by alternating displays on selected topics. The "Vom Sammeln" (From the Collection) display showcases new groups of objects from the Dessau Collection and objects that are not a part of the museum's permanent exhibition. The "Zu Gast" (Be Our Guest) array features curators, artists and objects from international Bauhaus collections and the "Im Experimentierraum" (Experimental Workshop) section gives visitors the chance to get creative themselves by trying their hand at small experimental design activities.

# BAUHAUS DESSAU



## Here it's worth taking a closer look!

The largest exhibits can be found outside of the museum – **the Bauhaus buildings** themselves. They are the common theme running through the town, from the popular Kornhaus tourist restaurant in the north to the Dessau-Törten housing estate in the south. Twelve of the buildings are accessible to the public, including the Bauhaus building, the Master Houses, Walter Gropius's historic Employment Office and the Konsum Building.

Visitors to the Bauhaus Museum Dessau can try their own hand at creativity by having a go at the small **experimental design activities**.

In the **designshop bauhaus dessau**, you will find not only books on the Bauhaus and the exhibition topics but also a selection of items in Bauhaus design, such as furniture, textiles, lamps, crockery, clocks and jewelry, as well as artefacts and work from contemporary designers, with a new theme featured regularly.

Since 1996, the Bauhaus building and the seven Master Houses in Dessau have been UNESCO World Heritage Sites, along with the Bauhaus building in Weimar. The Houses with Balcony Access, built under the direction of the second Bauhaus Director Hannes Meyer, joined the list of World Heritage Sites in Dessau in 2017.

## Step into a world of Modernism and experience UNESCO World Heritage

### Take a look backstage

#### Tours of the Bauhaus building

The hour-long tour through the Bauhaus building, built in **1925/26**, gives visitors an insight into the historic rooms that are normally not accessible. It includes the auditorium, the former director's office and an old student room.

### Budding maestros start early

#### Get creative at the Bauhaus Dessau

School visits from all year groups are very welcome at the Bauhaus Dessau. It offers exciting, modular tours at various locations as well as workshops where pupils can get to grips with different topics in more detail. Alternatively, why not visit the Open Workshop? This is where children between 8 and 14 can print their own fonts, design letters and collages, make masks and create stop-motion animation films. The Open Workshop has plenty on offer for older visitors, too, who can experiment with analog and digital media and become absorbed in crafts, building, design and programming to their hearts' content.

#### CONTACT

Bauhaus Dessau Foundation  
Gropiusallee 38  
06846 Dessau-Roßlau  
+49 (0) 3 40 / 65 08-250  
service@bauhaus-dessau.de

[www.bauhaus-dessau.de](http://www.bauhaus-dessau.de)

[instagram.com/bauhaus\\_](https://www.instagram.com/bauhaus_dessau_foundation)

[dessau\\_foundation](https://www.instagram.com/bauhaus_dessau_foundation)

[facebook.com/bauhausdessau](https://www.facebook.com/bauhausdessau)

[twitter.com/gropiusallee](https://twitter.com/gropiusallee)

#### PRESS CONTACT

Ute König  
+49 (0) 3 40 / 65 08-225  
presse@bauhaus-dessau.de

# THE GARDEN KINGDOM OF DESSAU-WÖRLITZ

## Gardens, avenues, castles and Enlightenment ideas



**The Garden Kingdom of Dessau-Wörlitz is famed for its superb landscape design, which unites art, culture and nature into one unique harmony. Visitors to the Kingdom can marvel at the many gems of garden design and architectural history throughout the 142 km<sup>2</sup> grounds.**

The starting point and highlight of the landscape design was Wörlitz. This was where the first English-style landscape garden on Continental Europe was created in 1765 and where Wörlitz Palace was built between 1769 and 1773, which is considered the first building of German Classicism. The culture and history of the Enlightenment can be experienced here as if in a time capsule.

The Garden Kingdom was created by **Leopold III Friedrich Franz, Prince of Anhalt-Dessau** (1740–1817), who transformed almost his entire principality into a beautiful landscape through an extensive development program. His visionary landscape design is characterized by a diverse range of stylistic eras. Older grounds such as the Baroque castle, the Oranienbaum Palace Gardens, and the Rococo ensemble Mosigkau were all artistically integrated into the new Garden Kingdom, allowing visitors to experience cultural periods from Baroque and Rococo to Classicism and Neo-Gothic all in one place.

In almost all areas of his life, Prince Franz proved to be an enlightened monarch. In addition to modernizing agriculture and education, he introduced major reforms in other areas, too.

**Wörlitz Park** with its buildings and evocative flower displays is particularly spectacular. Visitors can go on an educational journey retracing Prince Franz's steps through the park, where Enlightenment ideals are quite literally woven into the landscape and where Humanist ideas can still be experienced today. A particularly spectacular monument is the "Stein" Stone Island, Europe's only artificial volcano (which is even active from time to time). With its caves, classical theater and the Villa Hamilton, it depicts Prince Franz's memories of his journey to the Gulf of Naples. The Gothic House is home to a precious collection of stained glass windows dating from the fifteenth to the seventeenth century that have been tastefully integrated into the building's window panes.

In addition to Wörlitz Palace and Wörlitz Park, the other palaces and parks are also well worth a visit. Known affectionately as the "Small Sanssouci," the Rococo Mosigkau Palace offers an exquisite painting collection of Flemish and Dutch Masters. Oranienbaum Palace, Park and town is a baroque installation built on a geometric layout, and a rare example of an ensemble of mainly Dutch character in Germany. The English-style landscape garden and superb classical Luisium Palace, which the Prince commissioned in Dessau from 1774 to 1778 for his wife Louise, is one of the most idyllic locations in the Garden Kingdom. The Georgium in Dessau is named after Prince Johann Georg (1748–1811), the younger brother of Prince Franz. Following a restoration, it now houses the Anhalt Picture Gallery again. Its park is designed along the same lines as the one in Wörlitz. The restored "Princess's House" is to become a year-round exhibition center for the Kulturstiftung Dessau-Wörlitz (Dessau-Wörlitz Culture Foundation).



# THE GARDEN KINGDOM OF DESSAU-WÖRLITZ



Here it's worth  
**taking a closer look!**

The most unusual garden structure in the Wörlitz Kingdom is undoubtedly the artificial "Stein" Stone Island. It boasts a classical theater, many passageways and caves with a Night Temple and a Day Temple, a columbarium, the "Roman Baths," and the Emma Villa. An artificial volcano sits atop the whole island. Prince Franz found inspiration for this structure from his visit to Naples and Pompeii in 1766. If you are keen to visit, the "Vesuvius of Wörlitz" has been a spectacular attraction since 2005. The eruption is always part of an artistic program and is an impressive piece of art in itself. See the Garden Kingdom website for details

———**The Garden Kingdom of Dessau-Wörlitz became a UNESCO World Heritage Site in 2000.** According to the UNESCO World Heritage Committee: "The Garden Kingdom of Dessau-Wörlitz is an outstanding example of the application of the philosophical principles of the Age of the Enlightenment to the design of a landscape that integrates art, education, and economy in a harmonious whole." ———

Step into the Garden Kingdom of Dessau-Wörlitz and  
**experience UNESCO World Heritage**

**Meander through the park in a gondola**  
Trips on the lake and canals

**Gondola trips** over Wörlitz Lake and the canals are a delightful way to explore Wörlitz Park – you can even go out at dusk!

**A green start to spring**  
The Garden Kingdom awakes after hibernation

The **beginning of spring** signals the start of the tourist season for the Garden Kingdom of Dessau-Wörlitz. Highlights of the two-day spring festival **on the weekend after the official start of spring** include the spring market, concerts, special tours and artistic displays in front of Wörlitz Palace as well as the traditional parade on the Saturday and a gondola race on the Sunday.

**Double the fun in summer**  
Culture on every corner and tasty food on the water

**In summer**, the gardens and palaces are unique venues for concerts, theater productions and musical and literary treats. Lake concerts in Wörlitz offer double the fun: visitors can take a trip out on a gondola and enjoy a delicious dinner while listening to music being performed on the bridges and banks. The concerts in the historic grand halls of castles are just as unique, with the sumptuous interiors providing an elegant setting for musical performances.

**Garden Kingdom Day to mark the Prince's birthday**  
Experience events at lots of different locations

Events being held across the Garden Kingdom to mark **Garden Kingdom Day in August** encourage visitors to move from one spot to the next, experiencing this World Heritage Site in its entirety. The wealth of programmed events, some of which are also taking place outside the famous park grounds, highlight the diversity that the Kingdom has to offer in a truly memorable way. This day also celebrates Prince Franz, who was born on August 10, 1740.

## CONTACT

Dessau-Wörlitz Cultural  
Foundation  
Schloss Kühnau  
Ebenhanstraße 8  
06846 Dessau-Roßlau  
+49 (0) 3 40 / 64 61 50  
service@gartenreich.de

[www.gartenreich.de/en](http://www.gartenreich.de/en)

## PRESS CONTACT

Dr. Steffen Kaudelka  
+49 (0) 3 40 / 646 15-41  
steffen.kaudelka@gartenreich.de

# THE NEBRA SKY DISC

## Reaching for the stars in Saxony-Anhalt



moon depending on your interpretation – a crescent moon and 32 golden stars. Very few archaeological museum exhibits enjoy such worldwide renown as the Nebra Sky Disc. It has already been showcased as an exhibition centerpiece in Copenhagen, Vienna, Basel and Berlin. Since 2008 it has remained in the **State Museum of Prehistory in Halle (Saale)**.

It is well worth visiting the museum, but not just for its famous Sky Disc: it is one of the most important archaeological museums in Central Europe. The exhibitions at the State Museum show current research into amazing images, remarkable stories and artefacts of international significance. They present a realistic depiction of life during the Stone and Bronze Ages, with wild cave lions, formidable mammoths, contemplative Neanderthals, shamans, tombs and royal burial sites, and of course, the original Nebra Sky Disc.

The original Nebra Sky Disc is a magnet for visitors to the Landesmuseum für Vorgeschichte (State Museum of Prehistory) in Halle (Saale). The world's oldest physical representation of the sky is part of the museum's permanent exhibition. Visitors can immerse themselves in the world of the Early Bronze Age when the sky disc was made, as well as discovering exciting insights into other eras from the Stone Age to the Early Middle Ages.

This **discovery of the century, along with its associated "detective story,"** the fascinating astronomic and mythological symbols and the glitter of gold beguiles every visitor. In 1999, two metal detectorists illegally dug up a bronze disc on the Mittelberg and sold it to stolen-goods receivers. It was not until 2002, after the disc moved locations a number of times, that the police located it along with accompanying artefacts in a Basel hotel, and returned it safely to the Saxony-Anhalt State Archaeologist.

The Nebra Sky Disc is the world's oldest known physical representation of the cosmos, which makes it a **unique testament to human history**. The 3,600-year old bronze disc measures 32 centimeters in diameter and depicts the sun – or a full

# THE NEBRA SKY DISC



## Here it's worth taking a closer look!

---

What exactly is depicted on the Sky Disc? Why is it the archaeological discovery of the century? And what's the "detective story" behind its discovery? Visitors can find the answers to these and other questions at the State Museum of Prehistory in Halle (Saale) and at the **Nebra Ark Visitor Center, on the site where the Sky Disc was discovered**. This spectacular building, which resembles a golden ship sailing over the Unstrut valley, brings the history surrounding this archaeological treasure to life. Take the planetarium for example, the centerpiece of the Nebra Ark, where a 22-minute show unlocks the secrets of the Sky Disc and demystifies the astronomy behind it.

—————In June 2013, UNESCO incorporated the **Nebra Sky Disc in the Memory of the World Register**. This directory includes precious book collections, manuscripts, musical scores, unique objects, and picture, audio and video documents representing the collective memory of different peoples. —————

## Get up close to the Nebra Sky Disc and experience UNESCO World Heritage

---

### Experience something new every time

The Nebra Ark puts on a huge range of events

The **Nebra Ark's program** also includes special presentations and many different events from traditional talks and educational events to highlights such as the Sky Paths fun run and concerts.

### Walk the Sky Paths and reach for the stars

If you want to learn more, check out the **Sky Paths, an archaeological astronomical tourist route** in Saxony-Anhalt. In addition to the Nebra Ark and the State Museum of Prehistory in Halle, the sites along the Sky Paths include the Goseck Circle, Pömmelte Woodhenge and the dolmen goddess in Langeneichstädt.

#### CONTACT

State Museum of Prehistory  
Richard-Wagner-Straße 9,  
06114 Halle (Saale)  
+49 (0) 3 45 / 5247-30  
info@landesmuseum-vorgeschichte.de

[www.landesmuseum-vorgeschichte.de](http://www.landesmuseum-vorgeschichte.de)  
[www.himmelsscheibe.de](http://www.himmelsscheibe.de)  
[www.himmelswege.de](http://www.himmelswege.de)

#### CONTACT PERSON

Dr. Alfred Reichenberger  
+49 (0) 3 45 / 5247-312  
areichenberger@lda.stk.sachsen-anhalt.de

Dr. Michael Schefzik  
+49 (0) 3 45 / 5247-362  
mschefzik@lda.stk.sachsen-anhalt.de



# LUTHER MEMORIALS IN EISLEBEN AND WITTENBERG

## In the footsteps of the great reformer



Would you like to see the history of the Reformation brought to life in historical locations? Then simply visit the Luther Memorials in Wittenberg and Eisleben. Here both Martin Luther and Philipp Melanchthon have left their mark. Visit the Castle Church, on whose door Luther is said to have nailed his Ninety-five Theses, (also known as the Disputation on the Power and Efficacy of Indulgences) on October 31, 1517. His words went on to change the world.

No other German state is as closely linked with the Reformation and with the life and works of Martin Luther as Saxony-Anhalt. The **Luther Memorials in Eisleben and Wittenberg** form a combined World Heritage Site.

**Luther's House in Wittenberg** is the world's largest museum of Reformation history. The former Augustinian monastery was home to the Luther family and the center of his work for over 35 years. This is where he wrote his Ninety-five Theses and gave lectures to students from all over Europe and where his legendary Table Talk took place. Visitors to the house learn not just about Martin Luther the great reformer and scholar but also Luther the husband and family man. The centerpiece

of the house is the Luther Room, which has been the heart of commemoration of the reformer since his death in 1546. Guests from all over the world also come to the house to see numerous paintings by the masters Lucas Cranach the Elder and Lucas Cranach the Younger.

**Melanchthon's House** is one of the most beautiful town houses in Wittenberg. Elector Johann Friedrich commissioned it in 1536 for the scholar Philipp Melanchthon, who lived there with his family until he died. Visitors to the house can immerse themselves in the everyday life of Martin Luther's supporter.

Martin Luther was born on November 10, 1483, in Eisleben.

**The house where Luther was born** features over 250 fascinating exhibits telling the story of the reformer-to-be, how he was raised and exploring his close ties to his parents and the region.

Luther died in Eisleben on February 18, 1546, while on a visit to his home region of Mansfelder Land. **The house where Luther died** takes visitors through the reformer's final days and hours. Discover how Luther dealt with dying and death as a believer, comforter and theologian.

At the **Castle Church**, which was built starting in 1489 and consecrated in 1503, Philipp Melanchthon gave his inaugural lecture. Legend has it that Luther nailed his **Ninety-five Theses** to the main door of the Castle Church, ushering in the Reformation. Martin Luther and Philipp Melanchthon are still buried in the church. Another highlight is the bronze epitaphs to Frederick the Wise and his brother Johann the Steadfast from the Vischer workshop in Nuremberg. Visitors can explore this history-steeped location independently or accompanied by an expert tour guide.

In the St. Marien **town church**, Martin Luther preached and Johannes Bugenhagen ministered as the first evangelical pastor of the town. This is where the tradition of Protestant church services held in German began, with congregational singing and the Eucharist in both forms (bread and wine). As a result, Wittenberg town church is also known as the mother church of the Reformation. It is also an art treasury with a whole host of works from the workshop of Lucas Cranach the Elder and Lucas Cranach the Younger.

# LUTHER MEMORIALS IN EISLEBEN AND WITTENBERG



Here it's worth  
**taking a closer look!**

---

After discovering the museum at Melanchthon's House, visitors can while away the time in the tranquil surroundings of the traditionally designed **herb garden at the back of the house**. Medicinal plants are also grown here, a necessity in any learned herbalist's garden.

Martin Luther grew up in the town of Mansfeld, where he spent his childhood and attended school, and received the education that was to set him on the path to academia. His established lifelong friendships here and discovered a love of music. In **Luther's parents' house**, visitors can see fascinating archaeological artefacts that shine a light on the family's everyday life. It's important to remember that Mansfelder Land is the region where Luther grew up. Eisleben is where he was born, but his family moved to Mansfeld just a few months later. His parents settled in the town, bought a house and set up a business. Wittenberg was the only place where Luther spent more of his life; having spent his formative years in Mansfeld, he felt closely connected to the county for the rest of his life. Visitors can take part in public tours and be transported back in time to Luther's childhood.

—————To commemorate the importance of the Reformation in world history, in 1996 UNESCO recognized the Luther Memorials in Eisleben and Wittenberg as part of mankind's cultural heritage.—————

Visit the Luther Memorials in Eisleben and Wittenberg and **experience UNESCO World Heritage**

---

**Getting involved: The Monk Did It!**  
Thrilling time travel for young visitors

This interactive exhibition is the perfect choice for inquisitive children. Housed in the Augusteum, the exhibition takes them on a time-travelling journey to Wittenberg in the Late Middle Ages. Guided by Luther's dog Tölpel, who is no ordinary pooch, young adventurers can follow in the footsteps of the monk Martin Luther on the fateful night of October 31, 1517.

**Katharina's Kitchen Creations**  
Katharina von Bora reveals her secrets

In addition to the standard tours around the museums, there are also very special tours on offer, such as "Katharina's Kitchen Creations" tour complete with food tasting. On this tour through Luther's House and courtyard, visitors trace the footsteps of Katharina von Bora and learn about her everyday life with her husband Martin Luther. Discover how the Luther family lived, who lived with them, how they earned a living, what their marriage was like, what became of their children and, most importantly, what they ate and drank. Guests get to sample the tastes of the era themselves by enjoying culinary creations from Katharina's kitchen. There are also other themed tours on offer at Luther's House and Melanchthon's House, including "At Home with Katharina," "Cranach and Luther" and "Welcome to Mr. Schwarzerdt's Home."

## CONTACT

Luther Memorials Foundation  
in Saxony-Anhalt  
Collegienstraße 54  
06886 Lutherstadt Wittenberg

## PRESS CONTACT

Nina Mütze  
+49 (0) 34 91 / 420 31 27  
presse@martinluther.de

# NAUMBURG CATHEDRAL OF ST PETER AND ST PAUL

## Experience Uta's world



The four towers of the Cathedral of St Peter and St Paul can be seen from miles away, standing out in the hilly landscape between the Saale and Unstrut rivers. The cathedral is one of the most significant cultural monuments of the High Middle Ages in Europe. Its architecture, stained-glass and sculptural art are totally unique. The UNESCO World Heritage Committee recognized the cathedral's importance by awarding it World Heritage status in July 2018.

Visitors are especially fascinated with the cathedral's **figures of the founders in the west choir**, created by an unnamed stone sculptor almost 800 years ago. They are captivated by the statues' range of emotions: the various founders appear severe, vivacious, melancholic, sensitive, proud, bold and witty – staggering when you consider they were hewn from stone in around 1240 but still look so lifelike.

One figure is especially striking: **Uta von Naumburg** proud yet enigmatic. Umberto Eco called her “the most beautiful woman of the Middle Ages” and she was the inspiration for the Evil Queen in Walt Disney's Snow White, making the cathedral famous throughout the world.

Their creator, known as the “Naumburg Master,” was also behind the planning, design and features of the cathedral's west choir and west rood screen – a masterpiece of human creativity. Inspired by French Gothic cathedral architecture, he brought his workshop to Naumburg in the middle of the 13th century and completed his magnum opus in just six years. This makes him an outstanding living example of cultural exchange during the High Middle Ages.

The two **rood screens** that separate the choir from the nave are another impressive feature of the cathedral. No other church in the world boasts two preserved rood screens from the High Middle Ages! And to this day, they illustrate how the church was used at the time. The east choir was the main area for the liturgy given by the high diocesan clergy. The cathedral's Romanesque and Gothic artworks allow visitors to experience medieval liturgy in a way that is virtually unparalleled.

The **cathedral's treasure vault** houses an exhibition of more than 30 exquisite religious artefacts from the Middle Ages and the Renaissance, including St John's bowl from the 13th century, an altarpiece by Lucas Cranach and the unique Naumburg Pietà. Even simply entering the room is an experience – at around 285 m<sup>2</sup>, it is one of the largest Romanesque vaults in Central Germany.

The permanent exhibition near the cathedral tells the story of the Naumburg Master's creative journey from France to Germany and gives insights into his work and career. Visitors can wonder at the Master's distinctive skill exemplified by his precious originals, consummate duplicates of the Bamberg Horseman and the Mainz west rood screen, model churches and manuscripts and at his deep ties to French cathedral architecture.

# NAUMBURG CATHEDRAL OF ST PETER AND ST PAUL



Here it's worth  
taking a closer look!

**Romanesque and Gothic united in one building.** With its magnificent Romanesque artworks, such as the oldest stone sculpture of St. Elizabeth of Thuringia, its crucifix in the crypt with Christ as triumphator and the largest Romanesque vault in Central Germany, Naumburg Cathedral is the top visitor attraction on the Route of the Romanesque.

The cathedral boasts **modern artwork**, too. Two bronze handrails made by the Magdeburg artist Heinrich Apel adorn the staircases to the east choir. Artfully designed details, animals, plants and figures from the bible and classical mythology represent the arduous journey to paradise and depict St. Francis of Assisi preaching to the birds.

In 2007, contemporary glass windows whose central scenes depict the lives of the saints were installed in the Elisabeth chapel. These were designed by internationally renowned artist **Neo Rauch** of the New Leipzig School. On sunny days in particular, the chapel has an especially welcoming atmosphere.

———In light of the whole ensemble, consisting of the architecture, sculpture and stained glass, the UNESCO World Heritage Committee declared the Cathedral of St Peter and St Paul a World Heritage Site in 2018, as a “masterpiece of human creative genius.” ———

## CONTACT

Visitor Service  
Naumburg Cathedral  
Domplatz 16/17  
06618 Naumburg  
+49 (0) 3445 / 2301-133  
fuehrung@naumburger-dom.de

[www.naumburger-dom.de/en/](http://www.naumburger-dom.de/en/)

Funding agency:  
Combined Chapters of the Cathedrals  
of Merseburg and Naumburg and the  
Collegiate Church of Zeitz  
Domplatz 19,  
06618 Naumburg  
+49 (0) 3445 / 2301-0  
info@vereinigtedomstifter.de  
[www.vereinigtedomstifter.de](http://www.vereinigtedomstifter.de)

## PRESS CONTACT

Charlotte Tennler  
+49 (0) 3445 / 2301-114  
c.tennler@vereinigtedomstifter.de

Step into Naumburg Cathedral  
and experience UNESCO World Heritage

## Get up close to Naumburg Cathedral's masterpieces

### A cornucopia of art

Visitors to Naumburg Cathedral can experience world-renowned masterpieces up close and find out what sets the cathedral apart from other churches by taking part in public tours, audio-guided tours or treasure hunt quizzes for children. Tours of the tower offer visitors a change of perspective with fantastic views over the Saale-Unstrut region guaranteed and the chance to see the lifelike gargoyles practically head on. Exclusive and specialized tours offer unique and unusual insights into the Abbey Library, St. Giles chapel and the story behind the extensive restoration of the colorful, iridescent leaded windows. Visitors will also be blown away by the great beauty of the margravine Uta. The “Visit Uta” costume tour runs all year round.

## Moments to savor

### Experience culture with all your senses

Art and nature are perfectly combined at Naumburg Cathedral. The neighboring garden covering almost one hectare offers visitors an escape from the hustle and bustle of the surroundings. Nestled between medieval walls and bastions are picturesque ponds, blossoming flowers and the gardens belonging to the former canons: a real natural oasis in the middle of the town. But wine and art make for a delightful combination, too. Floral capitals decorated in exquisite detail by the Naumburg Meister reveal a great deal about the development of cultural trends and the significance of wine in the Saale-Unstrut region. The “From the Grape to the Glass” tour takes visitors through the unique tranquility of the cathedral garden and covers invaluable insights and fun facts about the role of wine at Naumburg Cathedral, topped off with wine tastings from local wine growers.

## In the footsteps of medieval artists

### Make your own masterpiece

Children, young people and even adults love to immerse themselves in the fascinating world of the Cathedral's Masons' Huts from the 13th century where they can embark on an exciting UNESCO World Heritage journey. Stepping into the shoes of a stonemason, glass artist or architect, you can get creative and make your own art works. You will not only get a greater sense of the phenomenal skill of these medieval artists, but also discover centuries-old secrets.



# QUEDLINBURG'S COLLEGIATE CHURCH, CASTLE AND OLD TOWN



This is where German history was made



**Quedlinburg boasts winding alleyways, half-timbered houses dating from different eras, medieval squares, modern art housed behind centuries-old walls, and the castle-hill with its castle and Romanesque Collegiate Church offering panoramic views: Quedlinburg is the only World Heritage City in Saxony-Anhalt. The foreland of the Harz mountains is a living monument, and an attraction that beguiles visitors from all over the world.**

German history was made in Quedlinburg over 1,100 years ago. In 919, on Finkenherd down below the castle-hill, Saxon duke Henry was crowned King. The precious objects in the treasury at the **Collegiate Church of St Servatius** still give a sense of the splendor and wealth of the Ottonian ruling dynasty today.

Quedlinburg was a high priority for the Ottonian ruling dynasty of the 10th century. The coronation of Henry I laid the foundations for the later Holy Roman Empire. He was buried in his favorite palace on Quedlinburg castle-hill in 936. The imperial **Quedlinburg ladies collegiate chapter** established by his widow Mathilde and his son – who later became Emperor Otto I – was one of the most important institutions of its time

in the German-speaking world. Its noble Abbesses had great impact on the town of- and the Harz region beyond. Initially, the chapter's main task was to commemorate Henry I and other Ottonian family members. In the 10th century, Quedlinburg was even a metropolis of the wealthy, the domicile of the Ottonian emperor and the location for significant royal court days and synods. The castle on the castle-hill was the residence of the powerful Abbesses. The crown princesses governed their lands and estates from here, and for centuries, decided the fate of the town below it.

The castle and its collegiate buildings on the castle-hill are currently having a facelift. After extensive restoration work, a new museum of the history of the ladies' collegiate chapter and the World Heritage City of Quedlinburg is to open in 2024. It will relate the story of this historic place's great importance in German and European history.

The imposing architecture of the castle-hill atop jagged rocks in the town center lends Quedlinburg a unique character. To this day, the medieval layout and much of the medieval building development with over 2,000 half-timbered houses dating across eight centuries have been authentically maintained. The cobblestones, alleyways and half-timbered buildings are steeped in so much history that visitors flock to see them.



# QUEDLINBURG'S COLLEGIATE CHURCH, CASTLE AND OLD TOWN



Here it's worth  
taking a closer look!

**Not just for romantics:** During **Advent**, Quedlinburg takes on a particularly inviting sparkle, with a host of events steeped in a Yuletide atmosphere.

**Not a UNESCO World Heritage site but very close by – and worth a detour:**

The Quedlinburg districts of **Bad Suderode** and **Gernrode** are strung like pearls along the edge of Harz, and both are within easy reach by the nostalgic Selke Valley Railway. The Calciumsole spa in the town of Bad Suderode, shaped by 19th century spa architecture, has been synonymous with health and wellbeing since 1826. In addition, the Behringer fountain is one of the most potent calcium springs in Europe and is mainly used to treat osteoporosis.

**Three gems on the “Route of the Romanesque” – and a cellar church**

West of the castle-hill and the Collegiate Church of St. Servatius, there are more exciting authentic Romanesque architectural experiences in store at St. Wiperti of the Valley and the remains of the former St. Mary's convent on the Münzenberg. The crypt at the Church of St. Wiperti is over 1,000 years old, making it one of the oldest buildings constructed in this important ruling location of the Ottonians. St. Mary's on the Münzenberg was built in 986, used as a church until 1536, then during the centuries that followed, for secular purposes. It was later built over and converted into twelve houses. The Münzenberg Museum brings to life the significant remains of what was originally St. Mary's Convent, describing the varied history of the small settlement opposite the castle-hill

— **This medieval town with over 2,000 half-timbered houses** dating across eight centuries, plus the castle-hill, became a UNESCO World Cultural Heritage Site in 1994. —

Visit Quedlinburg  
and experience UNESCO World Heritage

**Have you ever been in a Ständerbau?**

Explore the history of half-timbered architecture from the ground up

This **museum of timber framing, the only one in Germany**, is in a tall half-timbered house, or “Hochständerbau,” dating from the first half of the 14th century. Half-timbered buildings are structured by vertical posts or “studs” that run from the foundations or even the ground sill all the way up to the roof. Visitors to this interesting little museum learn a lot about half-timbered architecture from the 14th to the 19th century, and how Quedlinburg's period buildings were restored and reconstructed.

**Elementary knowledge for visitors to Quedlinburg**

History in the old schoolhouse

**Gernrode** is home to what is probably the **oldest elementary school in Germany**. The building, constructed in 1533 and lovingly restored, is open to visitors. You can even take lessons if you like – right there in the authentic historic schoolroom. The schoolhouse also has a permanent exhibition, “Minerals of the Harz,” shows art exhibitions, and is a mine of information on the history of the town and the school itself. Small but exquisite: At story times, you can sit by the tiled stove and listen to fairy tales while treating yourself to a baked apple.

**A ticket for the 1,000-year-old World Heritage City please!**

Lots of tours, lots of discoveries – one destination:

Quedlinburg

Discovering Quedlinburg on foot is wonderful. The daily tour through this UNESCO World Heritage Site is the ideal option for first-time visitors. Listen to a guided commentary on its history and architecture, and on life in a 1,000-year-old World Heritage City as you walk through the Old Town and up to the castle-hill. If you prefer an evening stroll, the night watchman's tour is for you. Inquisitive guests are welcomed by costumed tour guides including the midwife, Mother Griebisch, the talkative maid from the monastery, the night watchman, his wife or the protector of the collegiate church. These historic celebrities are brimming with anecdotes and fascinating stories about Quedlinburg's past.

## CONTACT

Quedlinburg-Tourismus-  
Marketing GmbH  
Markt 4  
06484 Quedlinburg  
+49 (0) 3946 / 905 620  
qtm@quedlinburg.de

[www.quedlinburg.de](http://www.quedlinburg.de)

## PRESS CONTACT

Sabine Bahß  
+49 (0) 39 46 / 905 522  
pressestelle@quedlinburg.de

## WHAT'S ON IN SAXONY-ANHALT?

# UNESCO WORLD HERITAGE SITE. EVENTS. EXHIBITIONS.

Second or third  
Sunday of May  
**International Museums  
Day – UNESCO Day of  
Celebration Saxony-Anhalt**

First Sunday of June  
**UNESCO World Heritage Day**

Second Sunday  
of September  
**Open Monument Day**



**BAUHAUS  
DESSAU**

**All year round**

**“Alternating displays: Bauhaus  
Experimental Spaces:  
The Collection”**

supplemented by alternating exhibitions  
Dessau Bauhaus Museum  
[www.bauhaus-dessau.de](http://www.bauhaus-dessau.de)

**All year round, every third  
Sunday of the month, 6 p.m.**

**“Beyond the Display Case –  
Artefact talks”**

Talks about individual artefacts from the  
Bauhaus Experimental Spaces exhibition  
Dessau Bauhaus Museum  
[www.bauhaus-dessau.de](http://www.bauhaus-dessau.de)

**All year round, Wednesdays (excluding  
Saxony-Anhalt school vacation), 4-6 p.m.**

**“Open Workshop at the  
Bauhaus building”**

for 8 to 14 year-olds  
[www.bauhaus-dessau.de](http://www.bauhaus-dessau.de)

**September**

**Bauhaus Festival**

Dance, music, art and installations  
Bauhaus building  
[www.bauhaus-dessau.de](http://www.bauhaus-dessau.de)



**THE GARDEN  
KINGDOM OF  
DESSAU-WÖRLITZ**

**Every year, early spring  
(March)**

**Spring Awakening**

A tradition seasonal welcome to the  
Garden Kingdom with a series of events.  
[www.gartenreich.de/en](http://www.gartenreich.de/en)

**Every year, mid-August  
Garden Kingdom Day**

Events in all parks commemorating the  
Garden Kingdom's creator, Leopold III  
Friedrich Franz, Prince of Anhalt-Dessau  
[www.gartenreich.de/en](http://www.gartenreich.de/en)

**May to September  
Summer in the  
Garden Kingdom**

The gardens and palaces serve as unique  
venues for concerts, theater productions  
and musical and literary treats, with lake  
concerts in Wörlitz, gondola trips, coffee  
concerts and promenade concerts.  
[www.gartenreich.de/en](http://www.gartenreich.de/en)  
[www.gartenreichsommer.de](http://www.gartenreichsommer.de)

**First weekend of Advent**

**Attractions for the whole  
family in historical settings**

Wörlitz



**THE NEBRA  
SKY DISC**

**All year round**

**Themed tours and  
permanent exhibitions**

e.g. Sunday, 10.30 a.m.: “Museum for the  
Well Rested,” or on the last Sunday of  
the month: “Family Afternoons” crafting  
goodies to take away State Museum of  
Prehistory in Halle (Saale)

[www.landesmuseum-vorgeschichte.de](http://www.landesmuseum-vorgeschichte.de)



**LUTHER  
MEMORIALS IN  
EISLEBEN AND  
WITTENBERG**

**June**

**“Luther's Wedding” festival**

Medieval festival lasting several days  
with a huge procession  
Lutherstadt Wittenberg  
[www.martinluther.de/en](http://www.martinluther.de/en)

**Mid-to-end September  
Pottery Market**

Ceramics and pottery  
workshops showcase their art  
Lutherstadt Wittenberg  
[www.martinluther.de/en](http://www.martinluther.de/en)

**September/October  
Renaissance Music Festival**

Lutherstadt Wittenberg  
[www.martinluther.de/en](http://www.martinluther.de/en)

The dates shown are a selection.  
Information is not guaranteed.  
Subject to change.

## WHAT'S ON IN SAXONY-ANHALT?

# UNESCO WORLD HERITAGE SITE. EVENTS. EXHIBITIONS.

**October 31**

### Reformation Day

Festival service, festival concerts at the churches, talks, city tours of "Reformation Day Eve," reformation festival  
Lutherstadt Wittenberg and  
Lutherstadt Eisleben  
[www.martinluther.de/en](http://www.martinluther.de/en)

**November 10**

### Luther's Birthday

A festival lasting several days, with medieval activities, cultural offerings and events  
Luther's Eisleben  
[www.martinluther.de/en](http://www.martinluther.de/en)

**Third weekend of Advent**

### Advent Festival at Luther's House and Courtyard

Exclusive tours, play-along theater, creative activities, markets, light installations  
Luther's House, Lutherstadt Wittenberg and the house where Luther died, Lutherstadt Eisleben  
[www.martinluther.de/en](http://www.martinluther.de/en)



**NAUMBURG CATHE-  
DRAL OF ST PETER  
AND ST PAUL**

**April to November**

### Exclusive and specialized tours

Last Friday of every month at 6.30 p.m.  
Naumburg Cathedral  
[www.naumburger-dom.de/en/](http://www.naumburger-dom.de/en/)

**Usually the first weekend of June**

### "Garden Rendez-Vous"

Naumburg joins the rest of Europe in celebrating parks and gardens. Open access to the cathedral gardens and a special tour of Naumburg Cathedral and its gardens  
[www.naumburger-dom.de/en/](http://www.naumburger-dom.de/en/)

**Usually part of**

### "Garden Rendez-Vous":

### "The Naumburg Master's Market"

However, if the date falls on Pentecost weekend, there is a handicrafts market in the open access cathedral gardens, and activities with the Cathedral's Masons' Hut  
Naumburg Cathedral, cathedral gardens, Cathedral Masons' Hut  
[www.naumburger-dom.de/en/](http://www.naumburger-dom.de/en/)

**First weekend of Advent**

### "Christmas Courtyards"

Handicrafts market in the cloisters and activities with the Cathedral's Masons' Hut  
Naumburg Cathedral, cathedral gardens, cloisters  
[www.naumburger-dom.de/en/](http://www.naumburger-dom.de/en/)



**QUEDLINBURG'S  
COLLEGIATE  
CHURCH, CASTLE  
AND OLD TOWN**

**First weekend of June**

### "KING'S FESTIVAL" – town festival commemorating King Henry I.

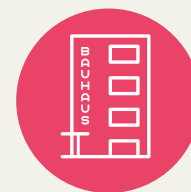
Town festival commemorating King Henry I and regional UNESCO World Heritage Day  
[www.quedlinburg.de](http://www.quedlinburg.de)

**First, second and third weekends of advent**

### "Advent in the Courtyards"

Exclusive access to inner courtyards, rarities and treasures accessed by historic paths  
[www.quedlinburg.de](http://www.quedlinburg.de)  
[www.adventsstadt.de](http://www.adventsstadt.de)

# UNESCO WORLD HERITAGE SITE BAUHAUS AND ITS SITES IN DESSAU



**IMAGE NAME:** 01\_UNESCO\_Bauhaus\_Bauhausgebäude.jpg

**FORMAT/SIZE:** JPG; 3888 x 2592 pixels  
(equivalent to approx. 32 x 22 cm at 300 dpi)

**PICTURE TEXT:** Bauhaus Building Dessau, architect:  
Walter Gropius (1925/26), south view

**COPYRIGHT:** Bauhaus Dessau Foundation /  
Photo: Yvonne Tenschert



**IMAGE NAME:** 02\_UNESCO\_Bauhaus\_Meisterhäuser.jpg

**FORMAT/SIZE:** JPG; 3888 x 2592 pixels  
(equivalent to approx. 32 x 22 cm at 300 dpi)

**PICTURE TEXT:** Muche/Schlemmer Master House,  
architect: Walter Gropius (1925/26)

**COPYRIGHT:** Bauhaus Dessau Foundation /  
Photo: Yvonne Tenschert



**IMAGE NAME:** 03\_UNESCO\_Bauhaus\_Bauhausgebäude\_Südseite.jpg

**FORMAT/SIZE:** JPG; 3888 x 2592 pixels  
(equivalent to approx. 32 x 22 cm at 300 dpi)

**PICTURE TEXT:** Bauhaus Building Dessau, architect: Walter  
Gropius (1925/26), south view with workshop wing and event area

**COPYRIGHT:** Bauhaus Dessau Foundation /  
Photo: Yvonne Tenschert



**IMAGE NAME:** 04\_UNESCO\_Bauhaus\_Laubenganghäuser.jpg

**FORMAT/SIZE:** JPG; 3888 x 2592 pixels  
(equivalent to approx. 32 x 22 cm at 300 dpi)

**PICTURE TEXT:** Laubenganghaus, architect: Hannes Meyer  
and Bauhaus Dessau Building Department (1929/30)

**COPYRIGHT:** Bauhaus Dessau Foundation /  
Photo: Yvonne Tenschert



**IMAGE NAME:**  
05\_UNESCO\_Bauhaus\_  
Gäserne\_Ecke.jpg

**FORMAT/SIZE:** JPG;  
2592 x 3888 pixels (equivalent  
to approx. 22 x 32 cm at 300 dpi)

**PICTURE TEXT:** Glazed corner,  
Bauhaus Building Dessau,  
architect: Walter Gropius  
(1925/26), south view

**COPYRIGHT:** Bauhaus Dessau  
Foundation / Photo: Christin  
Irrgang



# UNESCO WORLD HERITAGE SITE THE GARDEN KINGDOM OF DESSAU-WÖRLITZ



**IMAGE NAME:** 06\_UNESCO\_Gartenreich\_WörlitzerSchloss.jpg

**FORMAT/SIZE:** JPG; 1800 x 1304 pixels  
(equivalent to approx. 15 x 11 cm at 300 dpi)

**PICTURE TEXT:** Wörlitz Palace was the first-ever classicist building in mainland Europe and was constructed between 1769 and 1773 by Friedrich Wilhelm von Erdmannsdorff.

**COPYRIGHT:** Dessau Wörlitz Cultural Foundation /  
Photo: Heinz Fräßdorf



**IMAGE NAME:** 07\_UNESCO\_Gartenreich\_Luisium.jpg

**FORMAT/SIZE:** JPG; 2400 x 1821 pixels  
(equivalent to approx. 20 x 15 cm at 300 dpi)

**PICTURE TEXT:** Luisium Palace was built in the style of a country house, as a private retreat for Princess Louise of Anhalt-Dessau.

**COPYRIGHT:** Dessau Wörlitz Cultural Foundation /  
Photo: Heinz Fräßdorf



**IMAGE NAME:** 08\_UNESCO\_Gartenreich\_Mosigkau\_Galerieaal.jpg

**FORMAT/SIZE:** JPG; 3184 x 2556 pixels  
(equivalent to approx. 27 x 22 cm at 300 dpi)

**PICTURE TEXT:** The gallery at Mosigkau Palace houses a collection of eminent Dutch and Flemish masters such as Rubens and van Dyck displayed in a unique baroque series.

**COPYRIGHT:** Dessau Wörlitz Cultural Foundation /  
Photo: Heinz Fräßdorf



**IMAGE NAME:** 09\_UNESCO\_Gartenreich\_InselStein.jpg

**FORMAT/SIZE:** JPG; 2400 x 1593 pixels  
(equivalent to approx. 20 x 13 cm at 300 dpi)

**PICTURE TEXT:** The artificial Stone Island is based on the Gulf of Naples and boasts a classical theater, a volcano, Villa Hamilton, caves and Roman baths.

**COPYRIGHT:** Dessau Wörlitz Cultural Foundation /  
Photo: Heinz Fräßdorf



**IMAGE NAME:**

10\_UNESCO\_Oranienbaum\_Pagode.jpg

**FORMAT/SIZE:** JPG;  
1237 x 1800 pixels (equivalent  
to approx. 10 x 15 cm at 300 dpi)

**PICTURE TEXT:** The five-storeyed pagoda is in the English-Chinese garden and is used as a viewpoint and vantage point in the Oranienbaum Palace Park.

**COPYRIGHT:** Dessau Wörlitz Cultural  
Foundation / Photo: Heinz Fräßdorf



SACHSEN-ANHALT

#moderndenken



# UNESCO WORLD HERITAGE SITE NEBRA SKY DISC



**IMAGE NAME:** 11\_UNESCO\_Himmelsscheibe\_Ausstellung.jpg

**FORMAT/SIZE:** JPG; 2293 x 1794 pixels  
(equivalent to approx. 19 x 15 cm at 300 dpi)

**PICTURE TEXT:** Forest elephant room

**COPYRIGHT:** Saxony-Anhalt State Office for Heritage Management and Archaeology / Photo: Juraj Lipták



**IMAGE NAME:** 12\_UNESCO\_Himmelsscheibe\_Ausstellung.jpg

**FORMAT/SIZE:** JPG; 1920 x 1285 pixels  
(equivalent to approx. 16 x 10 cm at 300 dpi)

**PICTURE TEXT:** Neolithic room exhibit

**COPYRIGHT:** Saxony-Anhalt State Office for Heritage Management and Archaeology / Photo: Juraj Lipták

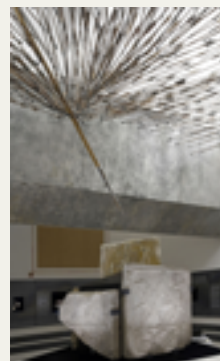


**IMAGE NAME:** 13\_UNESCO\_Himmelsscheibe\_Landesmuseum.jpg

**FORMAT/SIZE:** JPG; 2091 x 1417 pixels  
(equivalent to approx. 18 x 12 cm at 300 dpi)

**PICTURE TEXT:** State Museum of Prehistory Halle (Saale)

**COPYRIGHT:** Saxony-Anhalt State Office for Heritage Management and Archaeology / Photo: A. Hörentrup



**IMAGE NAME:** 14\_Himmelsscheibe\_Ausstellung.jpg

**FORMAT/SIZE:** JPG;  
2444 x 4000 pixels (equivalent  
to approx. 20 x 30 cm at 300 dpi)

**PICTURE TEXT:** "Cultural Strife"  
room exhibit, early Middle Ages

**COPYRIGHT:** Saxony-Anhalt State  
Office for Heritage Management  
and Archaeology / Photo: Andrea  
Hörentrup



**IMAGE NAME:** 15\_UNESCO\_Himmelsscheibe\_Ausstellung.jpg

**FORMAT/SIZE:** JPG;  
3183 x 4025 pixels (equivalent  
to approx. 27 x 34 cm at 300 dpi)

**PICTURE TEXT:** Mammoth and  
Neanderthal

**COPYRIGHT:** Saxony-Anhalt State  
Office for Heritage Management  
and Archaeology / Photo: Juraj Lipták



## UNESCO WORLD HERITAGE SITE LUTHER MEMORIALS IN EISLEBEN AND WITTENBERG



**IMAGE NAME:** 16\_UNESCO\_Luthergedenkstätten\_Geburtshaus.jpg

**FORMAT/SIZE:** JPG; 5000 x 3571 pixels  
(equivalent to approx. 42 x 30 cm at 300 dpi)

**PICTURE TEXT:** House where Luther was born, Eisleben.

**COPYRIGHT:** Luther Memorials Foundation in Saxony-Anhalt / Photo: Tomasz Lewandowski



**IMAGE NAME:** 17\_UNESCO\_Luthergedenkstätten\_Melanchthonhaus.jpg

**FORMAT/SIZE:** JPG; 5000 x 3571 pixels  
(equivalent to approx. 42 x 30 cm at 300 dpi)

**PICTURE TEXT:** Melanchthon's House, Wittenberg

**COPYRIGHT:** Luther Memorials Foundation in Saxony-Anhalt / Photo: Tomasz Lewandowski

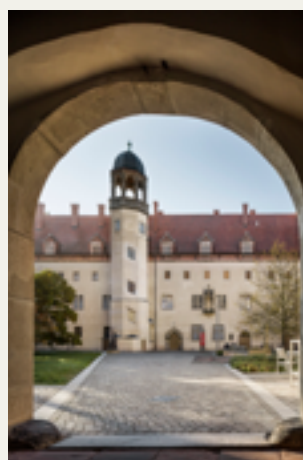


**IMAGE NAME:** 18\_UNESCO\_Luthergedenkstätten\_Sterbehaus.jpg

**FORMAT/SIZE:** JPG; 5000 x 3571 pixels  
(equivalent to approx. 42 x 30 cm at 300 dpi)

**PICTURE TEXT:** House where Luther died, with city wall, Eisleben

**COPYRIGHT:** Luther Memorials Foundation in Saxony-Anhalt / Photo: Tomasz Lewandowski



**IMAGE NAME:**  
19\_UNESCO\_Luthergedenkstätten\_Lutherhaus.jpg

**FORMAT/SIZE:** JPG;  
4667 x 7000 pixels (equivalent to approx. 39 x 59 cm at 300 dpi)

**PICTURE TEXT:** Luther's House, Wittenberg

**COPYRIGHT:** Luther Memorials Foundation in Saxony-Anhalt / Photo: Tomasz Lewandowski



**IMAGE NAME:**  
20\_UNESCO\_Luthergedenkstätte\_Schlosskirche\_Thesentür.jpg

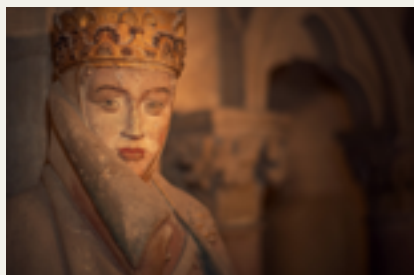
**FORMAT/SIZE:** JPG;  
3024 x 4032 pixels (equivalent to approx. 25 x 34 cm at 300 dpi)

**PICTURE TEXT:** Theses door, Wittenberg castle church

**COPYRIGHT:** Cornelia Kirsch



## UNESCO WORLD HERITAGE SITE NAUMBURG CATHEDRAL OF ST PETER AND ST PAUL



**IMAGE NAME:** 21\_UNESCO\_NaumburgerDom\_Stifterfigur\_Uta.jpg

**FORMAT/SIZE:** JPG; 7840 x 5227 pixels  
(equivalent to approx. 66 x 44 cm at 300 dpi)

**PICTURE TEXT:** Founder figure Uta

**COPYRIGHT:** Vereinigte Domstifter / Photo: F. Matte



**IMAGE NAME:** 23\_UNESCO\_NaumburgerDom\_Domschatz.jpg

**FORMAT/SIZE:** JPG; 5760 x 3840 pixels  
(equivalent to approx. 48 x 32 cm at 300 dpi)

**PICTURE TEXT:** Cathedral treasure vault

**COPYRIGHT:** Vereinigte Domstifter / Photo: F. Matte



**IMAGE NAME:** 25\_UNESCO\_NaumburgerDom\_KinderDomBauhütte.jpg

**FORMAT/SIZE:** JPG; 4000 x 2600 pixels  
(equivalent to approx. 34 x 22 cm at 300 dpi)

**PICTURE TEXT:** Creative activities, Cathedral Masons' Hut

**COPYRIGHT:** Vereinigte Domstifter / Photo: F. Matte



**IMAGE NAME:** 22\_UNESCO\_NaumburgerDom\_Westchor.jpg

**FORMAT/SIZE:** JPG; 4928 x 3280 pixels  
(equivalent to approx. 42 x 28 cm at 300 dpi)

**PICTURE TEXT:** West choir, Naumburg Cathedral

**COPYRIGHT:** Vereinigte Domstifter / Photo: F. Matte



**IMAGE NAME:** 24\_UNESCO\_NaumburgerDom\_Gesamtansicht.jpg

**FORMAT/SIZE:** JPG; 4200 x 2600 pixels  
(equivalent to approx. 35 x 22 cm at 300 dpi)

**PICTURE TEXT:** Naumburg Cathedral

**COPYRIGHT:** Vereinigte Domstifter / Photo: F. Matte





# UNESCO WORLD HERITAGE SITE QUEDLINBURG'S COLLEGIATE CHURCH, CASTLE AND OLD TOWN



**IMAGE NAME:** 26\_UNESCO\_Quedlinburg\_Münzberg.jpg

**FORMAT/SIZE:** JPG; 5115 x 3836 pixels  
(equivalent to approx. 43 x 32 cm at 300 dpi)

**PICTURE TEXT:** Half-timbered houses on the Münzenberg

**COPYRIGHT:** Quedlinburg-Tourismus-Marketing GmbH



**IMAGE NAME:** 28\_UNESCO\_Quedlinburg\_Nikolaikirche.jpg

**FORMAT/SIZE:** JPG; 4000 x 3000 pixels  
(equivalent to approx. 34 x 25 cm at 300 dpi)

**PICTURE TEXT:** View of Mathilde Fountain and  
St. Nicholas church

**COPYRIGHT:** Quedlinburg-Tourismus-Marketing GmbH



**IMAGE NAME:**  
30\_UNESCO\_Quedlinburg\_  
Rathaus\_Bleiglasfenster.jpg

**FORMAT/SIZE:** JPG;  
2203 x 2937 pixels (equivalent  
to approx. 19 x 25 cm at 300 dpi)

**PICTURE TEXT:** Lit leaded  
windows in the historic  
town hall

**COPYRIGHT:** Nico Reischke



**IMAGE NAME:** 27\_UNESCO\_Quedlinburg\_Nikolaikirche\_Kirchhof.jpg

**FORMAT/SIZE:** JPG; 5115 x 3836 pixels  
(equivalent to approx. 43 x 32 cm at 300 dpi)

**PICTURE TEXT:** St. Nicholas churchyard in the  
historic New Town

**COPYRIGHT:** Quedlinburg-Tourismus-Marketing GmbH



**IMAGE NAME:**  
29\_UNESCO\_Quedlinburg\_  
Rathaus\_Roland.jpg

**FORMAT/SIZE:** JPG;  
3888 x 5184 pixels (equivalent  
to approx. 33 x 44 cm at 300 dpi)

**PICTURE TEXT:** Roland statue in  
front of the historic town hall

**COPYRIGHT:** Quedlinburg-  
Tourismus-Marketing GmbH



## **TOURISM IN SAXONY-ANHALT**

The home of world-changing ideas, Saxony-Anhalt has been ahead of the times since the Bronze Age. A rare abundance of UNESCO World Heritage Sites awaits visitors: nowhere else can you experience European history in an authentic location, the “most beautiful woman of the Middle Ages,” Uta von Naumburg, strolls through the idyllic “Garden Dreams” gardens and parks, sensational archaeological discoveries along the Sky Paths, the story of Martin Luther at the original sites of the Reformation and the fascination of Bauhaus – all in close proximity to each other.

For more information, visit [saxony-anhalt-tourism.eu](https://saxony-anhalt-tourism.eu)

### **Individual research trip/blogger trip**

---

We are also happy to help you organize and take a personal research or blogger trip or take part in personalized themed trips to Saxony-Anhalt.

### **Text material**

---

We are happy to provide you with a variety of texts and stories of varying lengths for your research and blogs.

### **Image material**

---

Our online archive [www.reiseland.sachsen-anhalt-bilder.de](http://www.reiseland.sachsen-anhalt-bilder.de) gives you permanent access to current images of Saxony-Anhalt and its World Heritage Sites as a travel destination. Having registered once, you can research at your convenience and instantly download the images.

### **For all the latest information, visit:**

---

[www.world-heritage-saxony-anhalt.com/](http://www.world-heritage-saxony-anhalt.com/)  
[www.echtschoensachsenanhalt.de](http://www.echtschoensachsenanhalt.de)



### **Your contact**

---

Annika Jeschek  
*Tourism Marketing Coordinator*  
IMG Investment and Marketing Corporation Saxony-Anhalt  
Am Alten Theater 6  
39104 Magdeburg  
+49 (0) 173 6511 043  
[annika.jeschek@img-sachsen-anhalt.de](mailto:annika.jeschek@img-sachsen-anhalt.de)

